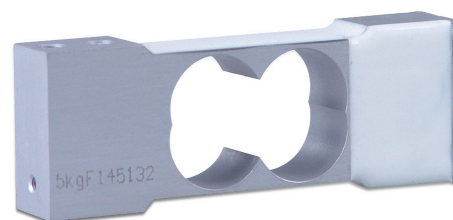


# L6J

- Aluminium–Alloy IP65 single point load cell
- Colourless anodized
- Suitable for single or double load cell structured platform scales
- Recommended platform size: 200 x 200 mm



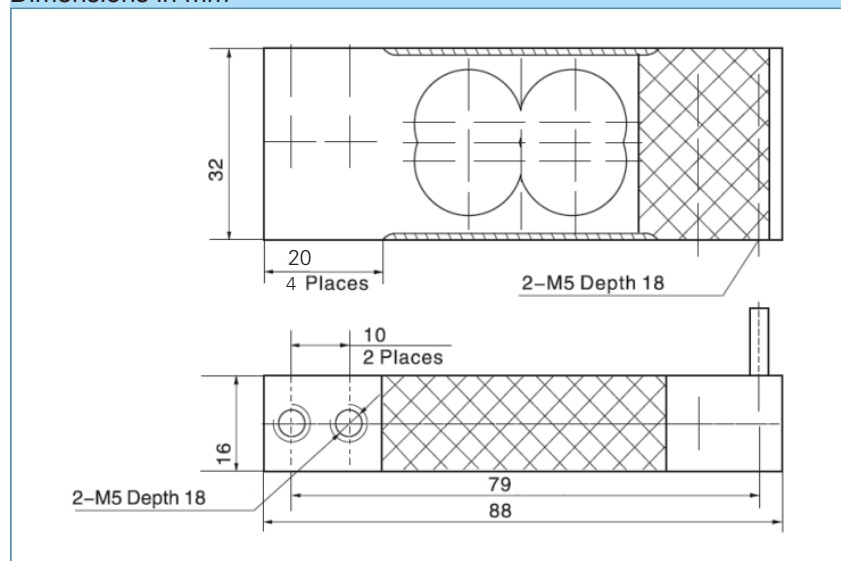
### Available models

| Capacity | Accuracy | Full article description |
|----------|----------|--------------------------|
| 2 kg     | C3D      | L6J–C3D–2kg–0.45B        |
| 3 kg     | C3D      | L6J–C3D–3kg–0.45B        |
| 5 kg     | C3D      | L6J–C3D–5kg–0.45B        |
| 8 kg     | C3D      | L6J–C3D–8kg–0.45B        |
| 15 kg    | C3D      | L6J–C3D–15kg–0.45B       |
| 20 kg    | C3D      | L6J–C3D–20kg–0.45B       |

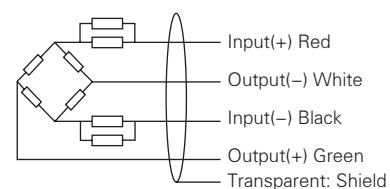
### Specification

|   |                     |                        |
|---|---------------------|------------------------|
| Accuracy class  |                     | C3D                    |
| Output sensitivity ( = FS )   | mV/V                | 1.5 ± 0.2              |
| Maximum capacity ( E <sub>max</sub> )   | kg                  | 2, 3, 5, 8, 10, 15, 20 |
| Maximum number of load cell intervals ( nLC )                                     |                     | 2500                   |
| Ratio of minimum LC verification interval Y = E <sub>max</sub> / V <sub>min</sub> |                     | 5000                   |
| Combined error  | %FS                 | ± 0.0280               |
| Minimum dead load   | of E <sub>max</sub> | 0%                     |
| Safe overload   | of E <sub>max</sub> | 150 %                  |
| Ultimate overload   | of E <sub>max</sub> | 300 %                  |
| Zero balance  | %FS                 | ± 2.0                  |
| Excitation, recommended voltage   | V                   | 5 ~ 12( DC )           |
| Excitation maximum  | V                   | 18( DC )               |
| Input resistance  | Ω                   | 406 ± 6                |
| Output resistance   | Ω                   | 350 ± 3                |
| Insulation resistance   | MΩ                  | ≥ 5000 ( 50VDC )       |
| Compensated temperature   | °C                  | -10 ~ +40              |
| Operating temperature   | °C                  | -35 ~ +65              |
| Storage temperature   | °C                  | -40 ~ +70              |
| Element material  |                     | Aluminium              |
| Recommended torque on fixation  | N.m                 | M5: 7                  |
| Ingress protection (according to EN 60529)  |                     | IP65                   |

### Dimensions in mm



### Wiring



- Shielded, 4 conductor cable.
- Cable Diameter: Φ3mm
- Standard cable length: 0.45m
- Shield not connected to element.
- Cable jacket is PVC.